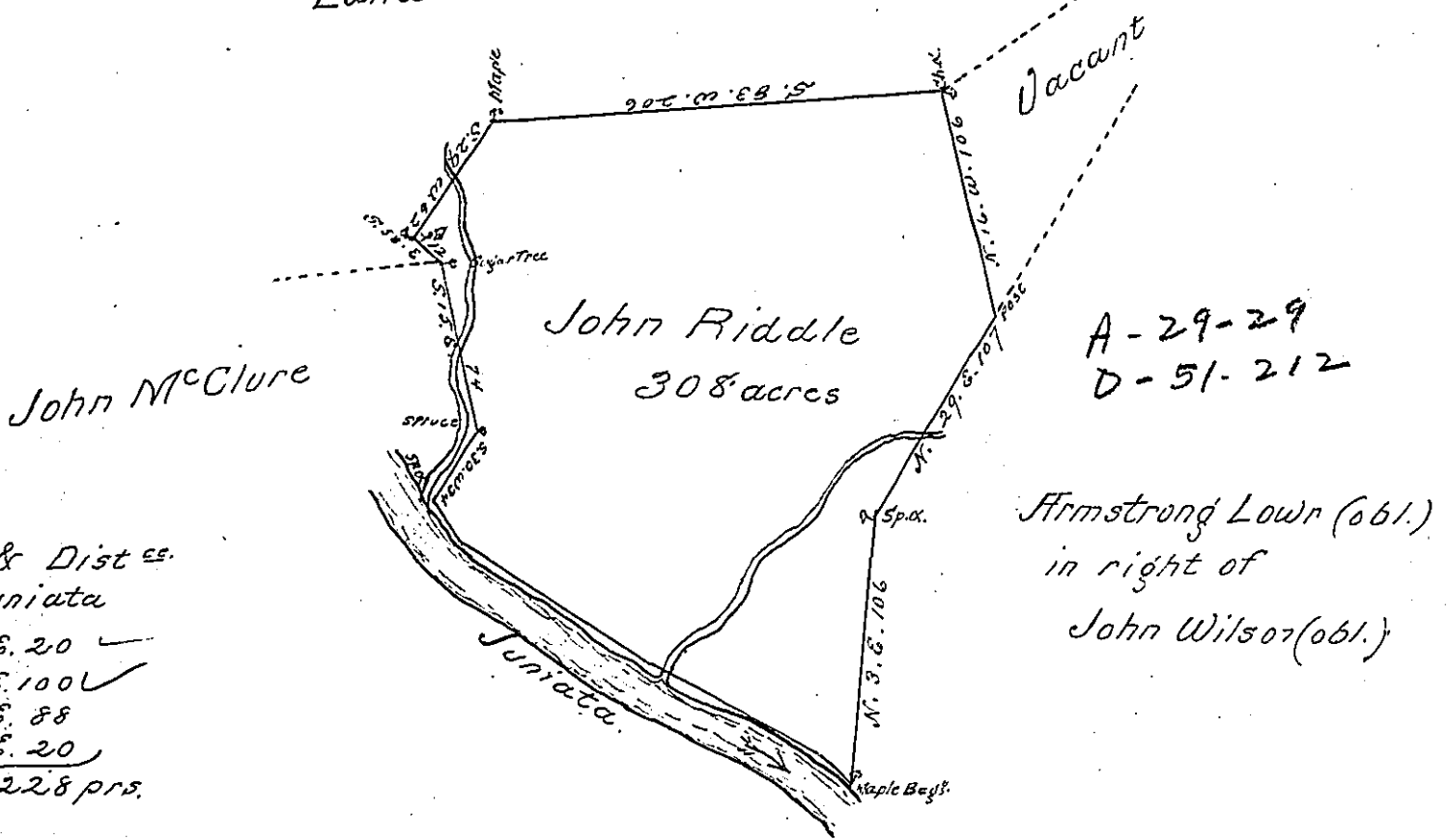


Land Survd. for John Howsel



Courses & Dist^{es}
down Juniata
 S. 35. E. 20 ✓
 S. 60. E. 100 ✓
 S. 65. E. 88
 S. 56. E. 20
 228 prs.

A Draught of a tract of land situate in Ferrisburgh township Mifflin County containing three hundred and eight acres and the usual allowance of six pcent for roads &c. Surveyed for John Riddle June 18th 1794 in pursuance of a Warrant dated May 29th. 1794

James Harris D.S.
 To Daniel Brodhead Esqr.
 Survr. Genl. of Pennsylvania

IN TESTIMONY that the above is a copy of the original remaining on file in the Department of Internal Affairs of Pennsylvania, made conformably to an Act of Assembly approved the 16th day of February, 1833, I have hereunto set my Hand and caused the Seal of said Department to be affixed at Harrisburg, this sixth day of November 1900

James O. Lewis
 Secretary of Internal Affairs.